

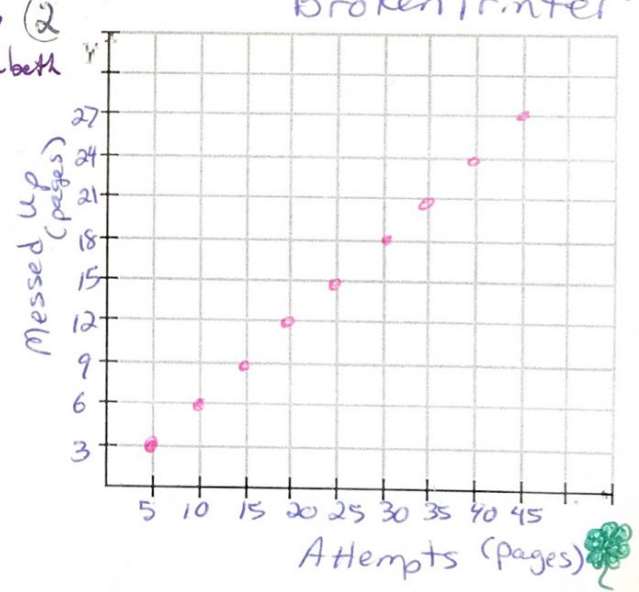
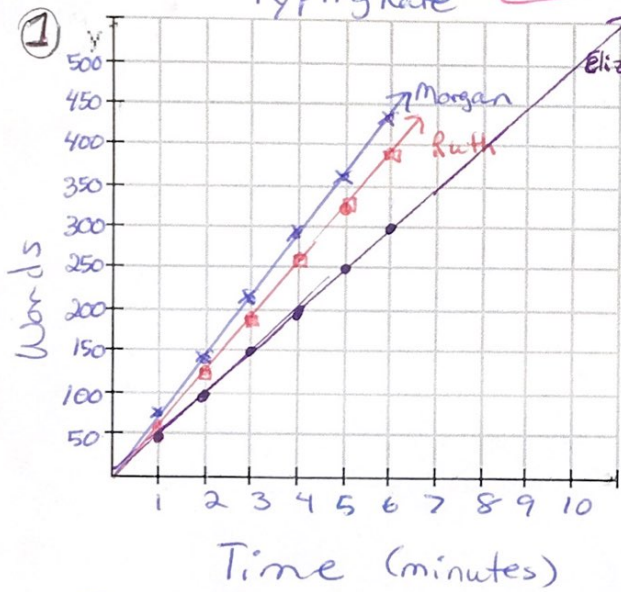
Time (minutes)

Time (minutes)

Typing Rate

Broken Printer

pg 98 #1+2 Review



(c) Morgan's > Ruth's > Elizabeth's

(d) Morgan's is fastest b/c hers is the steepest line.  
Elizabeth's is the slowest b/c hers is the lowest line.

②

Attempts	5	10	15	20	25	30
# of messed up	3	6	9	12	15	18