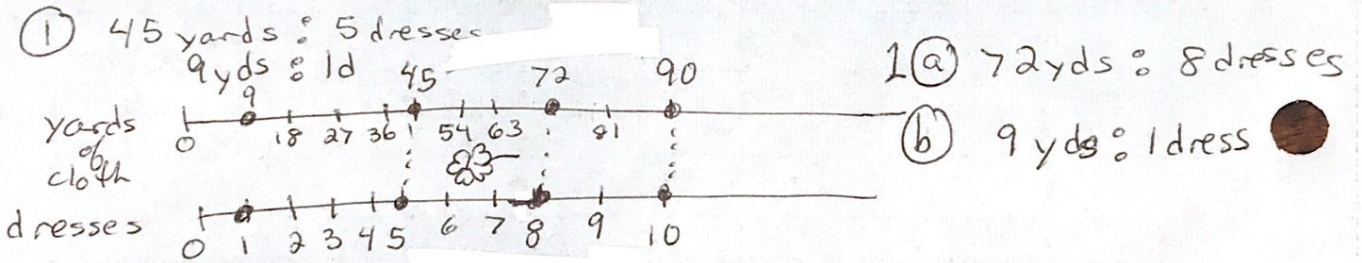


Review

Work below! :)

- Ellen loves to make her own clothes. With 45 yards of cloth, she can make 5 dresses. Create a double number line to explain your reasoning for each question.
 - If Ellen has 72 yards of cloth, how many dresses can she make?
 - If Ellen is going to make a dress for herself, how many yards of cloth does she need?
- A customer used a \$10 bill to pay for a 39-cent candy bar. Simone returned 61 cents. What mistake did Simone make? Explain how she should correct her mistake.
- A grocery store is selling ground beef for \$1.89 per pound. How much does it cost to buy 2.5 pounds?
- Use estimation to place the decimal point in the correct position in each quotient.
 - $2.1 \overline{)48.72} = 232$
 - $8 \overline{)204.8} = 256$



② $39¢$ plus $.61¢ = \cancel{\$}1.00$ not $\cancel{\$}10$. This is a decimal issue. She should have $\cancel{\$}10.00 - 0.39 = \text{change}$

$\cancel{\$}10.00$
 $\quad \quad \quad .39$
 $\hline \cancel{\$}9.61$ is the correct change

③ $\cancel{\$}1.89 \times 2.5 = \boxed{\$4.73}$

$\frac{1 \text{ lb}}{2.5 \text{ lb}} = \frac{2.5 \text{ lb}}{2.5 \text{ lb}}$

$\begin{array}{r} 1.89 \text{ 2 dec} \\ \times 2.5 \text{ 1 dec} \\ \hline 945 \\ + 3780 \\ \hline 4.725 \text{ 3 dec} \\ \approx \cancel{\$}4.73 \end{array}$

④ a) $2 \overline{)48.} \text{ (Est)}$

$2.1 \overline{)48.72} = 23.2$

↑

④ b) $8 \overline{)204.} \text{ (Est)}$

$8 \overline{)204.8} = 25.6$

↑