

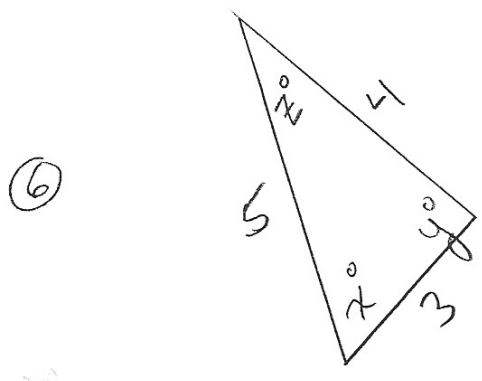
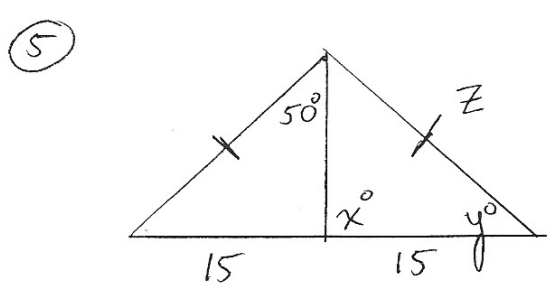
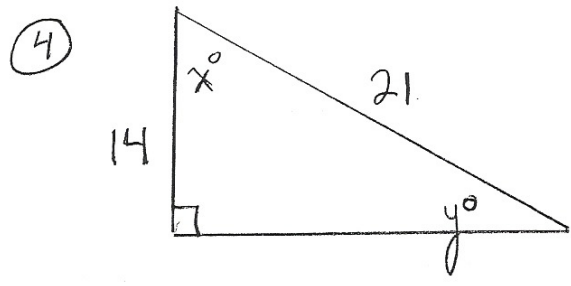
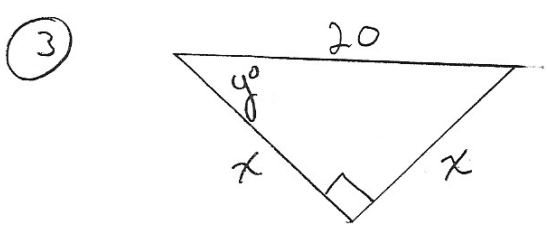
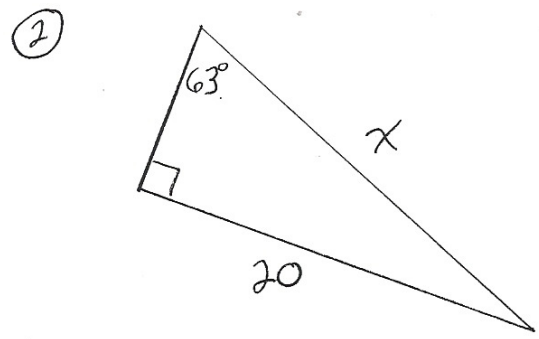
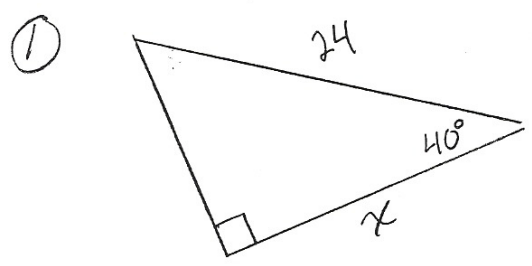
Pre-Calculus  
Trig Review

Name \_\_\_\_\_

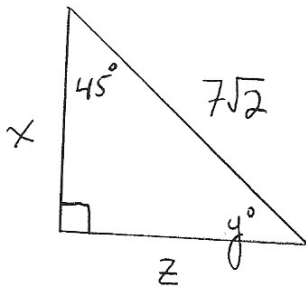
Date \_\_\_\_\_

A# \_\_\_\_\_

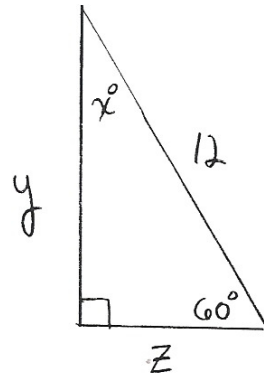
Find  $x$  and  $y$ . Write all answers to 3 decimal places.



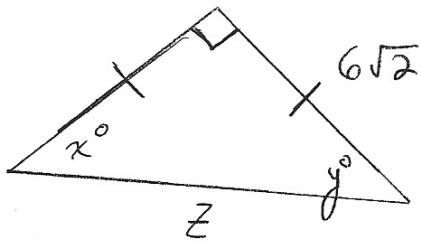
⑦



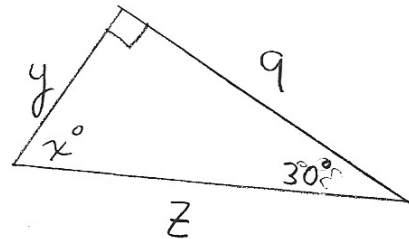
⑧



⑨



⑩



- ⑪ a) Write the equation of a circle with a point  $A(6, 8)$  on the circle and the origin as the center.
- b) Consider the radius  $\overline{AO}$ . What is the angle measure that the radius makes with the  $x$ -axis?

- ⑫ The Goodyear Blimp spots Candlestick park with an angle of depression of  $7^\circ$ . The pilot looks at the gps and notes that their vertical elevation is  $4,000$  ft. What is the blimp's horizontal distance from the park?